

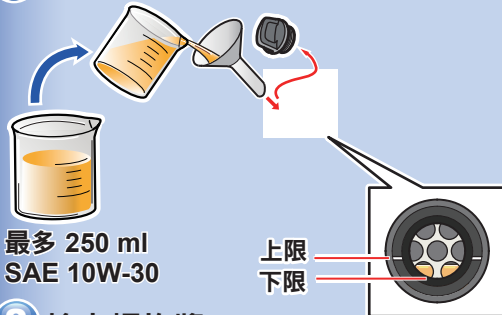


* 操作船外機前，請閱讀並理解用戶手冊。

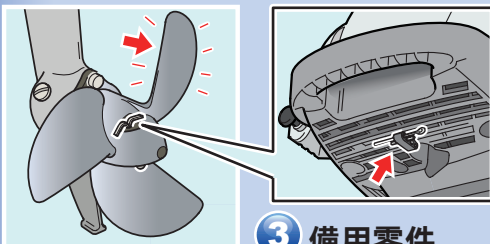


▶ 如何起動

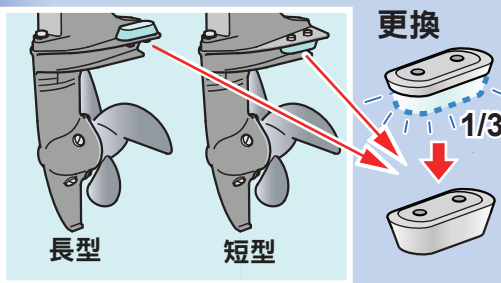
1 檢查引擎機油



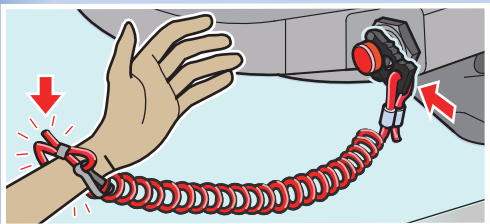
2 檢查螺旋槳



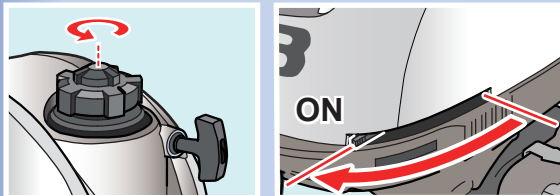
4 檢查陽極金屬



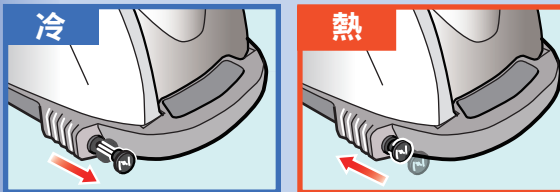
5 緊急停機開關



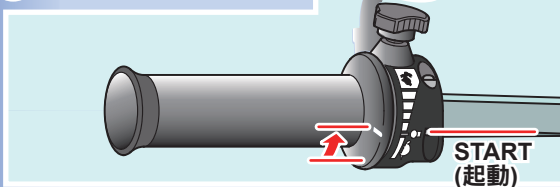
6 出風口旋鈕開啟 7 燃油閥桿 ON



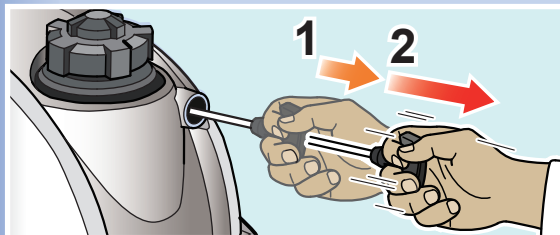
8 阻風門 ON/OFF



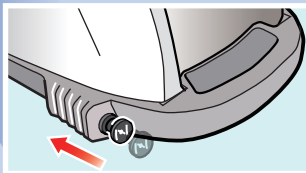
9 節氣門：起動



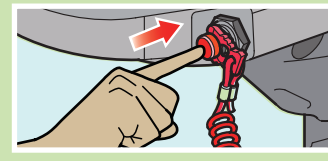
10 起動



11 (阻風門 OFF)

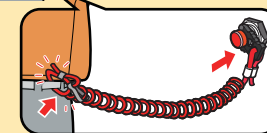


P 停機開關：按下



⚠ 安全注意事項

穿好救生衣！



將繩固定至操作裝置！

時時注意船舶周圍情況！



注意天氣變化！



▶ 如何停機

9 → P → 7 → 6